

# airwash<sup>®</sup> MULTIPRO Air Scrubber

## Interlocking cabinet profile

*Provides stability when stacking during transport or when daisy-chaining multiple units*

## Contoured flex handle

*Ample clearance for comfort and mobility, flexes downward for secure stacking*

## Air flow indicator

*Indicates reduced airflow, alerting user filter change may be necessary*

## 12" inlets/outlets

*Accommodates up to 800 cfm*

## Durable housing

*Rugged UL 94 compliant flame retardant polyethylene housing for tough environments*

## Quick release latches

*Toolless filter changes and access for cleaning*

## Variable speed control

*Customize the airflow levels you need from 250 to 800 cfm*

## User-friendly control panel

*GFI protected receptacle outlets, allowing daisy chaining up to three units*



## Application Options

### Perfect Seal<sup>®</sup> HEPA

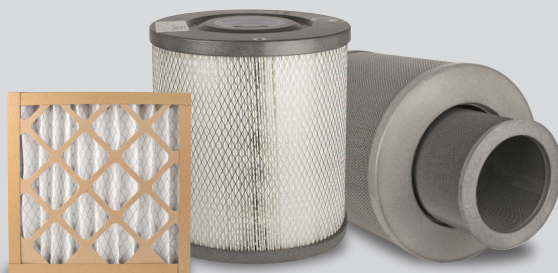
Toolless cylindrical Perfect Seal<sup>®</sup> HEPA filter media for dedicated fine particulate filtration down to 0.3 microns, option to add up to 3 pre-filters for extended service life

### Perfect Seal<sup>®</sup> HEPA/VOC Combo

Toolless cylindrical Perfect Seal<sup>®</sup> HEPA & 5 lb. inner canister of dedicated activated carbon for air borne chemical and odour absorption, option to add up to 3 pre-filters for extended service life

### Ultra VOC

25 lb. activated carbon canister for extreme air borne chemical and odour absorption, option to add up to 3 pre-filters for extended service life



1-800-268-7732  
www.amaircare.com

# airwash<sup>®</sup> MULTIPRO Air Scrubber

## Ordering Information



2Y-A-1KPG-00

AirWash<sup>®</sup> MULTIPRO Negative Air Scrubber, includes installed Perfect Seal<sup>®</sup> HEPA cylinder and silicone O-ring



AFC1000726

Media pad pre-filter, 13" x 13" x 1"



AFC1057554

Pleated pre-filter, MERV 8, 13" x 13" x 2"



91-A-1407-ET

Washable foam pre-filter, compatible with HEPA and exterior carbon cylinder



90-A-14ME-ET

Toolless Perfect Seal<sup>®</sup> HEPA cylinder



94-A-1402-UL

Ultra VOC Carbon cylinder, exterior 25 lb (gross weight) activated carbon canister



89-A-00F-00D8-RS

Replacement silicone O-ring for HEPA and exterior carbon cylinder



94-A-1402-ET

VOC Carbon cylinder, interior 5 lb. (gross weight) activated carbon canister



92-A-1401-ET

VOC Carbon blanket, interior



89-A-POS-16-NA

Replacement wire pre-filter holder

## AirWash<sup>®</sup> MULTIPRO Specifications

|                          |   |
|--------------------------|---|
| Weight:                  | 36 lbs (without filters); 42 lbs (with HEPA filter)   |
| Dimensions:              | 19" W x 20" H x 32" L 9 (482.6 W x 508 H x 812.8 L)   |
| Airflow:                 | 250 to 800 CFM  |
| Variable Speed Control:  | 3050 RPM max  |
| Power Supply:            | 115 vac/1 ph./60 Hz.                                  |
| Operating current:       | 2.6 amps  |
| Daisy Chain:             | Up to three units on a 9 amp circuit                  |
| Stackable:               | Up to three units                                     |
| Inlet/Outlet Connection: | 12" dia. collar                                       |
| Country of Manufacture:  | Canada  |
| Warranty:                | 1 year (excluding filters)                            |
| Standards:               | CAN/CSA C22.2 No. 113-15 (10th Ed.), UL 507 (9th Ed.) |

### Dealer Information:

**Barb Lulay**  
**USAirPurifiers.com**  
**888-231-1463 Ext 1**

## Save time and money!

**Toolless access for speedy on site filter changes and change part maintenance**

**Perfect Seal 360° cylindrical HEPA filter provides up to 25% more surface area than competitor filters, resulting in longer filter life and fewer filter changes**

**Perfect Seal 360° delivers balanced particulate loading until filter reaches full capacity**

**Multi functionality for diverse applications – particulate, VOC or combination**