

Quick start guide



EN Intended use / Important safety instructions

Intended use

The device is used exclusively for cleaning the ambient air indoors.



You will find detailed operating instructions at www.mbmcorp.com.



Important safety instructions

Read and save these instructions:


- Please follow the safety instructions to prevent fire, electric shock and injury to persons associated with use of the appliance.
- Only use the device indoors.
- Only use a wall socket that supplies the correct voltage (see rating plate).
- Do not modify or repair the device.
- Do not use the device if the power cable or mains plug is damaged or if the connection at the wall socket is not stable.
- Make sure that the power cable does not get crushed while you are using the device and that it cannot be damaged in any other way. Place the cable so that no one will trip over it. Do not place the power cable under strain.
- Disconnect the plug from the wall socket for cleaning purposes, before servicing and whenever the device is not in use for a significant period of time.
- Do not touch the plug or the device if you have wet hands.
- Keep packing material, such as plastic wrapping, away from children! (Risk of suffocation)
- Place the device at least 10 cm away from the wall.
- Keep the device away from areas subjected to draft (wind).
- Make sure that furniture, fabrics or other objects do not come in contact with the air intake/outlet or block them.
- Place the device on a stable, even surface and make sure there is sufficient air circulation.
- Do not spray any insect repellent.
- Do not use in rooms where the device may come into contact with fuel vapour or metal dust.
- Do not use any volatile liquids, petroleum, kerosene, paint thinner or polishing paste to clean the device. Such liquids may damage the surface of the device.
- Do not expose the device to rain, water, moisture or high humidity, and do not set it up in a bathroom or kitchen next to a sink.
- Make sure that no foreign objects get into the outlet grilles.
- Do not use near an open fire or sparks.
- The device is not suitable for removing harmful gases (carbon monoxide, e.g. from heating appliances).
- The appliance is not to be used by persons (including children) with reduced physical, sensory or mental capabilities, or lack of experience and knowledge, unless they have been given supervision or instruction.
- Children being supervised not to play with the appliance.
- Do not block the air intake and outlet.
- Keep this air purifier away from direct sunlight, naked flames or heat.
- Only use the air purifier in closed interiors and within the specified technical parameters. Improper usage may pose a threat to life and health.
- Do not use the unit near a fire alarm. If the outlet air is blowing towards a fire alarm, the alarm may respond late or not at all.

EN Important safety instructions


Important safety instructions


- Disconnect the mains plug prior to any cleaning or maintenance work.
 - Replace the filter cartridge as soon as the filter replacement indicator lights up. The average life expectancy of the filter is approx. 1 year (depending on operation and purification activities).
 - Clean the air purifier housing with a lint-free cloth moistened with soapy water.
 - Clean the filter cartridge's pre-filter with a vacuum cleaner.
 - Do not use any solvents. These could damage the housing surface.
 - Protect the air purifier from water.
 - Do not use any substances containing silicone, since this could destroy the air quality sensor.
 - Do not test the effectiveness of the air quality sensor with high quantities of gas, or alcohol, since this could destroy the air quality sensor.
 - Clean the textile cover with a vacuum cleaner.
 - If necessary, the textile cover can also be washed by hand (please refer to the care instructions on the label).
-
- **WARNING: Chemical Burn Hazard.** Keep batteries away from children.
 - This product contains a lithium button/coin cell battery. If a new or used lithium button/coin cell battery is swallowed or enters the body, it can cause severe internal burns and can lead to death in as little as 2 hours. Always completely secure the battery compartment. If the battery compartment does not close securely, stop using the product, remove the batteries, and keep it away from children. If you think batteries might have been swallowed or placed inside any part of the body, seek immediate medical attention.

Warning symbols

- 



Risk of injury due to electric shock. Always disconnect the mains plug prior to:

 - Carrying out maintenance work or cleaning
 - Moving the device
 - Changing the filter
- 

Do not use any spray cans with flammable content near to the Air Purifier!
- 

Do not use any flammable cleaning agents.

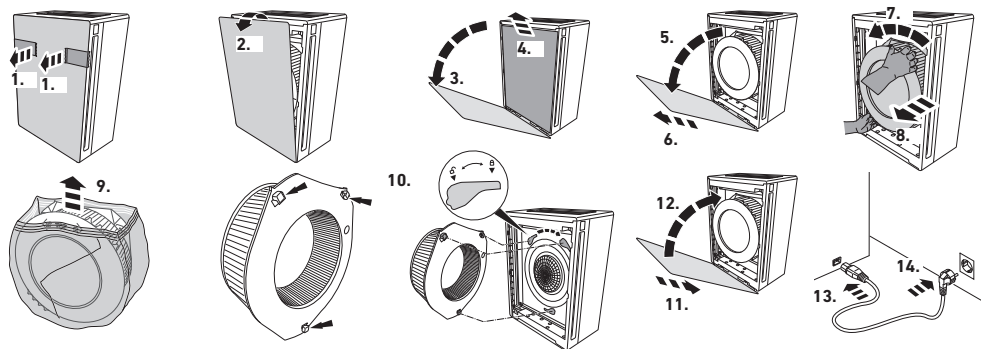
Important informations about batteries

 WARNING	
<ul style="list-style-type: none">• INGESTION HAZARD: This product contains a button cell or coin battery.• DEATH or serious injury can occur if ingested.• A swallowed button cell or coin battery can cause Internal Chemical Burns in as little as 2 hours.• KEEP new and used batteries OUT OF REACH OF CHILDREN• Seek immediate medical attention if a battery is suspected to be swallowed or inserted inside any part of the body.	

- Remove and immediately recycle or dispose of used batteries according to local regulations and keep away from children. Do NOT dispose of batteries in household trash or incinerate.
- Even used batteries may cause severe injury or death.
- Call a local poison control center for treatment information.
- Always use 3V lithium batteries CR2025.
- Non-rechargeable batteries are not to be recharged.
- Do not force discharge, recharge, disassemble, heat above (manufacturer's specified temperature rating) or incinerate. Doing so may result in injury due to venting, leakage or explosion resulting in chemical burns.
- Ensure the batteries are installed correctly according to polarity (+ and -).
- Do not mix old and new batteries, different brands or types of batteries, such as alkaline, carbon-zinc, or rechargeable batteries.
- Remove and immediately recycle or dispose of batteries from equipment not used for an extended period of time according to local regulations.
- Always completely secure the battery compartment. If the battery compartment does not close securely, stop using the product, remove the batteries, and keep them away from children.

EN Setting up / Operation

Setting up



Fan speeds

- Press the on/off button (A) to switch the air purifier on or off.
- The air purifier runs in automatic mode **A**. In automatic mode, the fan speed (G) automatically adapts to the measured air quality. The worse the air quality, the higher the fan speed.
- Press the fan speed button (B) to exit automatic mode. The air purifier now runs at fan speed **1**. Press again to increase the fan speed to **2**. Press again to increase the fan speed to **3**, or to the turbofan speed **T**.
- The turbo speed setting for fast purification of the ambient air requires the air purifier to run at maximum capacity. This can only be selected manually.

Air quality indicator (E)

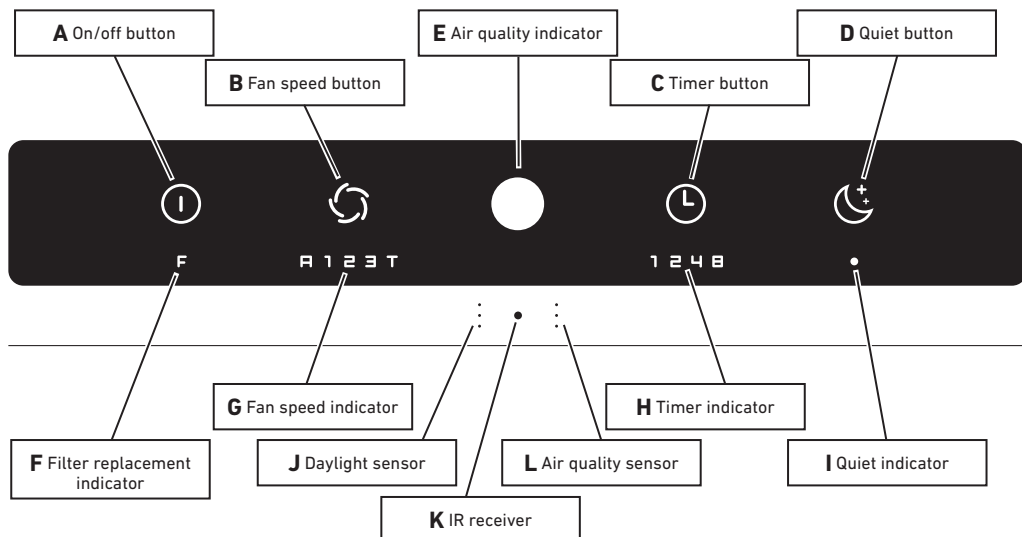
The air quality is displayed in 3 colours:

- Green: good air quality
- Yellow: average air quality
- Red: poor air quality

Filter replacement indicator (F)

An illuminated red "F" on the control panel indicates that the filter needs replacing.

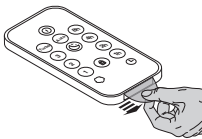
- The life expectancy of the filter is approx. 1 year (depending on operation and purification activities).
- If odours are no longer being filtered out, or if the filter produces unpleasant odours, then the filter cartridge needs to be replaced sooner.
- Only use original IDEAL filter cartridge. The device will only function with an original IDEAL filter cartridge.



EN Operation

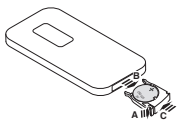
Remote control

When using for the first time



The remote control has a pre-installed lithium battery CR2025. **Remove the protective flap** to activate the remote control battery.

Replacing the battery

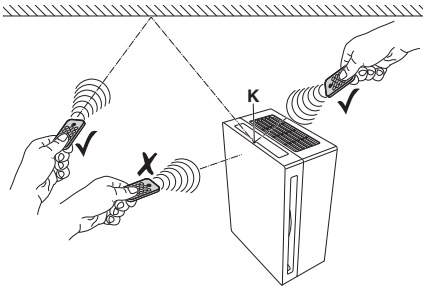


- Open the battery compartment by pressing **(A)** and pulling out **(B)** at the same time. Take out the flat battery.
- Insert a new battery into the battery compartment, making sure the polarity is correct (+ / -).

- Always use 3V lithium batteries CR2025.
- Slide the battery compartment back into its seating **(C)**.

How to use correctly

- Point the remote control at the air purifier (IR receiver K).

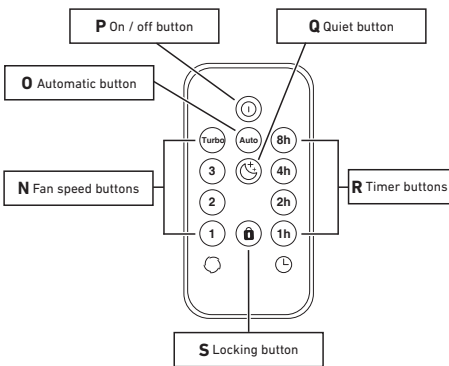


Important information about the batteries and how to dispose of them

Batteries must NOT be disposed of with household waste. As the user, you are legally obligated to return used batteries for proper disposal. You can hand in your batteries at public collection points in your community or wherever the same type of batteries are sold.

- It is very important that you make sure that the polarity of the batteries is correct. Wrongly inserted batteries could destroy the device – a fire hazard.
- Do not try to open or damage batteries and do not throw batteries into a fire.
- Batteries that are leaking fluid are dangerous. Only touch these with suitable gloves.
- Keep batteries out of the reach of children.
- Take the batteries out of the device if you are not going to be using it for a significant period of time.
- The cells shall be disposed of properly, including keeping them away from children.
- Even used cells may cause injury.

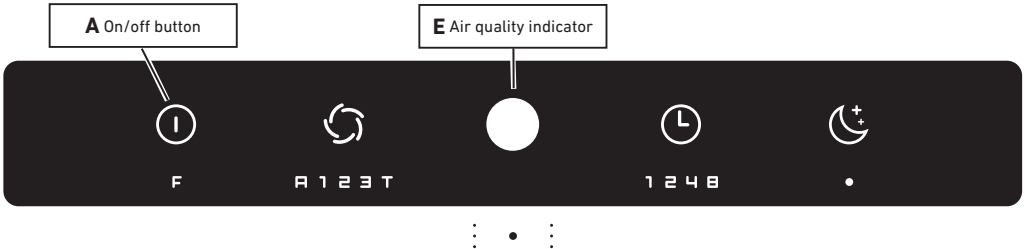
Function



- N:** Select the required fan speed .
- O:** Switches the air purifier to automatic mode .
- P:** Switches the air purifier on/off .
- Q:** Switches the air purifier to Quiet mode .
- R:** Select the required timer time .

S: Press the locking button to lock the buttons on the control panel (air purifier). Press the locking button again to unlock. The lock can also be removed by disconnecting the air purifier from the mains or by pressing and holding down the on/off button **(A)** on the device.

Note:
When you operate the remote control, the air quality indicator **(E)** lights up for approx. 1 second in acknowledgement. If you operate a button on the control panel (air purifier) while the locking function is activated, the air quality indicator **(E)** lights up briefly in red.



EN Operation

Changing the filter

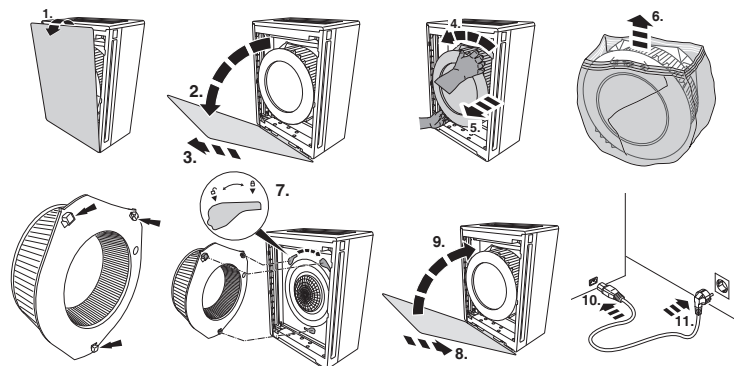
(e.g. in accordance with the filter replacement indicator F

Note:

Only original IDEAL filter cartridges (order from www.mbmcorp.com) may be used. No tools are required to replace the filter cartridge.



CAUTION: Disconnect the mains plug!




Note:


The air purifier automatically detects that a new IDEAL filter cartridge has been inserted and automatically resets the filter replacement indicator.

Technical data

IDEAL AP60 PRO:

Power supply	200-240V-50/60Hz / 100-120V-50/60Hz
Power consumption	90W (200-240V) / 75W (100-120V)
Suitable for rooms	50 to 70 m ² *
Air flow rate (max.)	600 m ³ /h
Dimensions (L × W × H)	468 × 275 × 668 mm
Weight	15 kg
Volume at turbofan speed T (max.)	56,6 dB(A)
Volume in Quiet mode  (min.)	16,5 dB(A)

IDEAL AP80 PRO:

Power supply	200-240V-50/60Hz / 100-120V-50/60Hz
Power consumption	175W (200-240V) / 180W (100-120V)
Suitable for rooms	70 to 90 m ² *
Air flow rate (max.)	750 m ³ /h
Dimensions (L × W × H)	468 × 275 × 668 mm
Weight	15 kg
Volume at turbofan speed T (max.)	63,4 dB(A)
Volume in Quiet mode  (min.)	18,7 dB(A)

Subject to technical changes.

* For a room height of 2.50 m

Disposal

This device must not be disposed of with household waste! Please hand this device in at the collection points provided! Collecting and recycling electrical and electronic waste conserves valuable resources!

The packaging material can be recycled. Dispose of the packaging in an environmentally friendly manner and take it to the recyclable waste collection.

Thanks!



EN EC-declaration of conformity

This machine is approved by independent safety laboratories and is in compliance with the EC-regulations. The exact technical specifications can be found on the technical specifications sticker on the machine. To claim under guarantee, the machine must still carry its original identification label. Subject to alterations without notice.

EC-declaration of conformity

- Herewith we declare that

IDEAL AP60 PRO Made in Germany
IDEAL AP80 PRO Made in Germany

GS-IDENT. No.
11874101
11874102

UL-IDENT. No.
10874101
10874102

- complies with the following provisions applying to it

2014/35/EU Low voltage directive
2011/65/EU, 2015/863/EU RoHS directive
2014/30/EG EMV Electromagnetic compatibility directive

- Applied harmonised standards in particular

IEC 61000-3-2; IEC 61000-3-3; EN 61000-3-2; EN 61000-3-3;
EN 60335-2-65; EN 60335-1;
EN ISO 13857; EN 55014-1; EN 55014-2;
BS EN 55014-1; BS EN 55014-2 ;
BS EN 61000-3-2; BS EN 61000-3-3;
BS EN 60335-2-65; BS EN 60335-1; BS EN ISO 13857-1

09.02.2022
Date

Authorized representative for technical documentation:



Krug & Priester GmbH & Co. KG
Simon-Schweitzer-Str. 34
D-72336 Balingen (Germany)

- Managing Director -



Certifications

The company Krug + Priester has the following certifications:

- Quality management system according to DIN EN ISO 9001:2015
- Environmental management system according to DIN EN ISO 14001:2015
- Energy management system according to DIN EN ISO 50001:2018





Supplier's Declaration of Conformity
47 CFR § 2.1077 Compliance Information

This device complies with part 15 of the FCC Rules. Operation is subject to the following two conditions:

- (1) This device may not cause harmful interference, and
- (2) this device must accept any interference received, including interference that may cause undesired operation.

Manufacturer: KRUG + PRIESTER GMBH & CO KG
Simon-Schweitzer-Straße 34
72336 Balingen, Germany

U.S. Responsible Party: MBM Corporation
3134 Industry Drive
North Charleston SC, 29418
Tel: 843-552-2700
Mail: info@mbmcorp.com

Trade Name: IDEAL

Models: AP 30/ 40/ 60/ 80/ 140 PRO

Classification: FCC Part 15B

We herby declare, that the equipment bearing tradename and model number specified above was tested conforming to the applicable FCC rule part(s) 15B and the most accurate measurement standards. We confirm that the necessary steps have been taken and are in force to assure that the production units of the same equipment will continue to comply with the Commission's requirements.

Krug + Priester GmbH & Co KG

NOTE: This equipment has been tested and found to comply with the limits for a Class B digital device, pursuant to part 15 of the FCC Rules. These limits are designed to provide reasonable protection against harmful interference in a residential installation. This equipment generates, uses and can radiate radio frequency energy and, if not installed and used in accordance with the instructions, may cause harmful interference to radio communications. However, there is no guarantee that interference will not occur in a particular installation. If this equipment does cause harmful interference to radio or television reception, which can be determined by turning the equipment off and on, the user is encouraged to try to correct the interference by one or more of the following measures:

- Reorient or relocate the receiving antenna.
- Increase the separation between the equipment and receiver.
- Connect the equipment into an outlet on a circuit different from that to which the receiver is connected.
- Consult the dealer or an experienced radio/TV technician for help.

To ensure compliance with FCC and ISED RF exposure requirements this device must be installed to provide a minimum of 20cm between the device and people.

KRUG+PRIESTER

Krug & Priester GmbH & Co. KG
Simon-Schweitzer-Str. 34
D-72336 Balingen (Germany)