

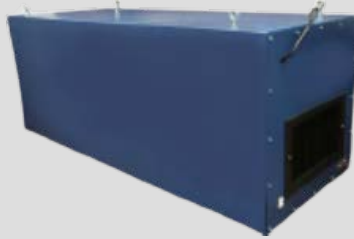


US Air Purifiers LLC
Peoria, Illinois 61615
888-231-1463 ext 1
USAirPurifiers.com

Industrial Strength Ambient Air Cleaners

A-2500

Ambient Air Cleaner - 2500 CFM



Specifications

Dimensions	24" W x 24" H x 59" L
Weight	150 lbs
Power	115V/1/60
Amps	10.2
Wiring	3 Prong With 10 Feet of Cord
CFM - Maximum	2500
Motor	3/4 HP Direct Drive w/ Thermal Overload
Cabinet	16 Gauge Steel
Finish	Blue Powder Coat
Speed Control	Low and High Toggle Switch
Air Flow	Straight Through
Decibals	65 dBA at 5'
Warranty	3 Years, Excluding Filters

Part #	Filtration
A-2500-3/4HP-1P	24 x 24 x 4, Pleated Pre Filter 24 x 24 x 36, 65% Bag Filter
A-2500-3/4HP-1P-HE	24 x 24 x 4, Pleated Pre Filter 24 x 24 x 15, 95% Bag Filter 20 x 20 x 12, 99.97% HEPA Filter
A-2500-3/4HP-1P-SA-CC	24 x 24 x 4, Pleated Pre Filter 24 x 24 x 15, 95% Bag Filter 36 lb. Charcoal Cannister Filter

Part #	Options
A-MAG	Magnehelic Pressure Gauge 0-2" W.C.
A-WMK	(2) Wall Mounting Brackets
A-CMK	Hanging Kit (chain, eye bolts, and snap links)
A-NPBI-FAC	Needlepoint Bipolar Ionization

Dealer Information / Contact:

APPLICATIONS: Provides efficient removal of irritating contaminants such as smoke, chemical fumes, mist, or dust.

METHOD OF OPERATION: Dirty air enters one side of the collector and is trapped in the filters and clean air is exhausted.

INSTALLATION: Suspend from the ceiling with chains/threaded rod or hang on the wall with brackets.

KEY BENEFITS

- Avoid health and safety hazards that cause respiratory ailments.
- Reduce make-up air requirements by cleaning and re-circulating air versus exhausting outside.
- Reduce housekeeping by filtration with airborne particles that settle on equipment.
- Lower in cost for the amount of cfm.
- Assists meeting OSHA standards (based upon filtration and design considerations).

SIZING EXAMPLE: A company performs welding and grinding intermittently at several work stations in a room. The smoke and fumes irritate employees in the room. Fans are installed in the room to assist with the smoke, while providing cool air during summer months. The room is 80' x 40' x 15' tall = 48,000 cubic feet.

48,000 x "air changes per hour needed." Use 6 for light dust/fumes/smoke, 8 for moderate, and 10 for heavy. 48,000 x 10 (heavy) = 480,000.

480,000 divided by 60 minutes per hour = 8,000 cfm required for all the air in the room to cycle through the filters 10 times an hour. The A-2500-3/4HP-1P rated for 2,500 cfm, so 8,000 divided by 2,500 = 3.2 units required.

For this application we would recommend (4) A-2500-3/4HP-1P-HE units staggered in the room. The HEPA filter option is best for smoke. However, (4) A-2500-3/4HP-1P-CF units could be used if smell is more of an issue than the smoke.



US Air Purifiers LLC
Peoria, Illinois 61615
888-231-1463 ext 1
USAirPurifiers.com

IONIZATION (NPBI)

IAP's ambient air cleaners with ionization are designed for use anywhere that fine airborne contaminants, odors or pathogens are a concern. The multiple stages of filters in our units provide "active" filtration of the dirty air passing through them, while the ionizer projects ions via the exhaust air to provide "passive" air filtration outside of the unit.

NPBI – The patented Needlepoint Bipolar Ionization (NPBI) technology utilized in our units uses an electronic charge to create a plasma field filled with a high concentration of + and – ions. As these ions travel with the air stream they attach to particles, pathogens and gases. The ions help to agglomerate sub-micron particles. This makes them filterable, kill pathogens by robbing them of life-sustaining hydrogen, and breaks down harmful VOCs into harmless compounds like oxygen, carbon dioxide, nitrogen, and water vapor. This process maximizes the overall effectiveness of the units to safely clean the air inside your building.

FILTERS

Pre-Filters – A 4" pleated pre-filter is provided. These are used to economically capture larger particles, extending the life of the second stage multi-pocket bag filter.

Bag Filters – These are high quality, micro-glass, multi-pocket, bag filters which handle the largest share of the particulate filtration process. Depending on the options, they can be MERV 11 or MERV 15.

Activated Charcoal (optional) – Installed after the above bag filters, the unit can be equipped with a 2" thick activated granular charcoal filter. This allows for active adsorption of gaseous air contaminants (VOC's) by attraction to, and bonding of, the molecules to the surface of the carbon. Adsorption is a critical component for reducing VOC's and odors in the air.

Charcoal Canister (optional) – Installed after the above bag filters, the unit can be equipped with (2) canisters, each filled with 18 lbs of granular, activated charcoal.

HEPA Filters (optional) – Available in our A-2500 series units, HEPA filters are installed as a 3rd stage of filtration after the above bag filters. These commercial/industrial grade filters are rated at 99.97% efficiency based on a .30 micron particle. HEPA filters are suitable anytime sub-micron particles are an issue in your environment.

All filters are disposable and easy to access within the unit, allowing for quick and simple maintenance.